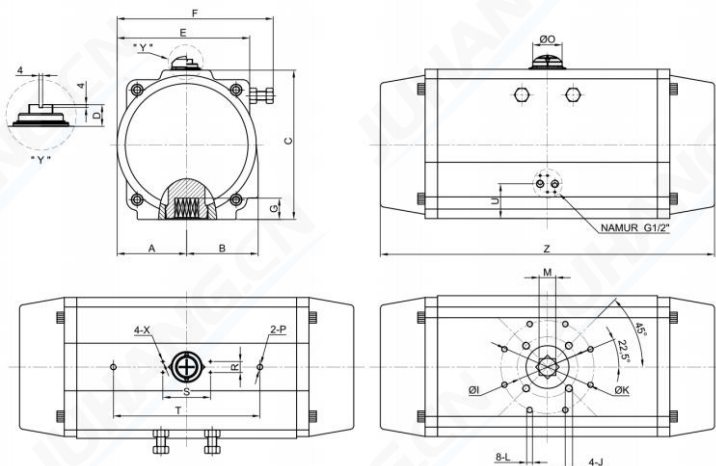


JHA5700DA 90° DATASHEET



Reference Parameters		
Cylinder size	350	mm
Weight	156	kg
Air volume	Open	34.5
	Close	45.2
Cycle speed*①	Open	<13
	Close	<13
Pressure rang	2 up to 8	bar(g)
Media	Clean,dry and non-corrosive compressed air	
Temperature	High	-15 up to 150
	Standard	-20 up to 80
	Low	-40 up to 80
Flange	F16/F25	
Stroke	90±5	°

> According to EN 15714-3 & ISO 5211

>\*①. Test conditions: clean air with a pressure of 6 bar,the diameter of the pipe is 10 mm,and the temperature is room temperature.

Dimensions in mm																					
Model	A	B	C	D	E	F	G	U	φK	L	M	R	S	T	O	J	φI	P	Z	X	Air connection
JHA5700DA	190	195	408	30	362	426	58	95	254	M16*25	46	30	130	400	80	M20*25	165	M16*20	912	M5*8	G1/2"

OUTPUT TORQUE (Unit:N.m)

Model	Air Supply Pressure in bar(g)										
	2	2.5	3	3.5	4	4.5	5	5.5	6	7	8
JHA5700DA	2314	2892	3471	4049	4628	5206	5784	6363	6941	8098	9255

OUTPUT TORQUE (Unit:lbf.in)

Model	Air Supply Pressure in psi										
	29	36	44	51	58	65	73	80	87	102	116
JHA5700DA	20481	25596	30721	35836	40961	46077	51192	56317	61433	71673	81913

Notes:

- > 1 bar(g) = 14.5038 psi ; 1 N.m = 8.8507 lbf.in
- > For further information regarding options , materials , certifications and additional execution please contact JUHANG's sales office.
- > Flange and bi-square drive shall comply with ISO 5211 standard.
- > Solenoid valve mounting interface according to VDI/VDE 3845(NAMUR)

